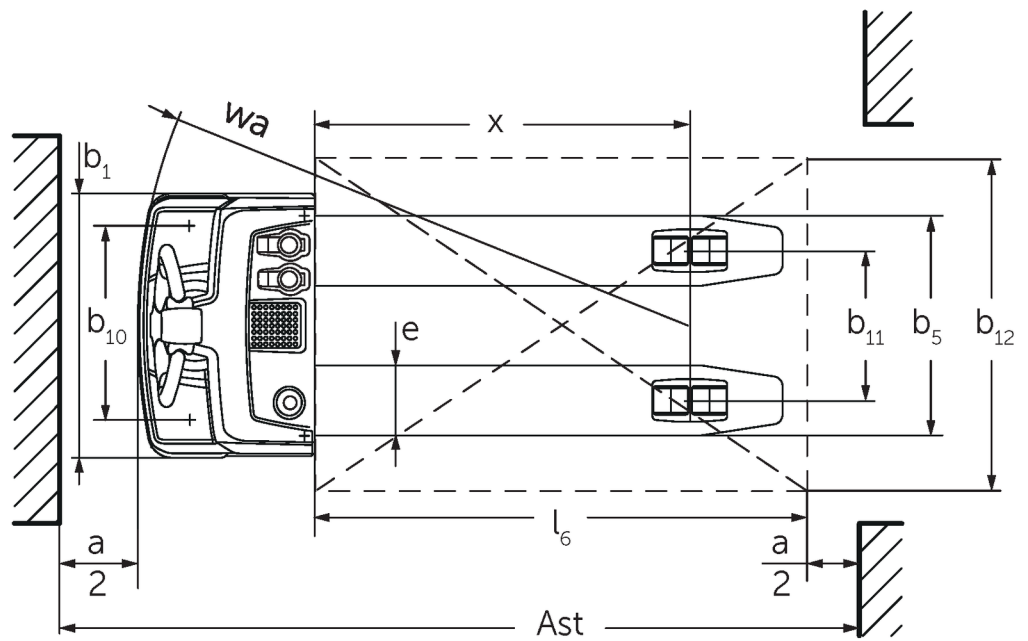
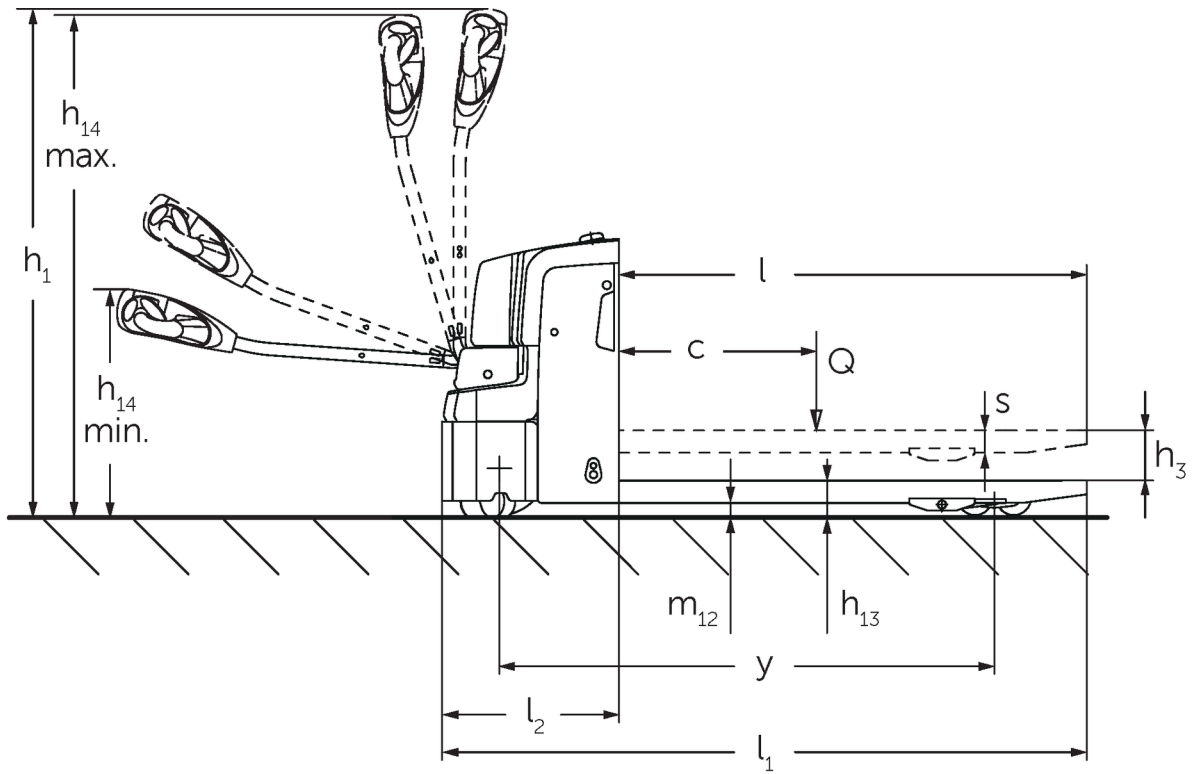




Electric pedestrian pallet truck **EJE M13 / M15**

Lift height: 120 mm / Load capacity: 1300-1500 kg

EJE M13 / M15



VDI table

Stand-on: 11/2021

Characteristic	1.1	Manufacturer (abbreviated description)		Jungheinrich					
	1.2	Manufacturer's type designation		EJE M13 540x1150	EJE M13 550 x 1,150 weighing system	EJE M13 670x1550	EJE M15 540x1000	EJE M15 540x1150	EJE M15 550 x 1,150 weighing system
	1.3	Drive		Electric					
	1.4	Operation		Pedestrian					
	1.5	Load capacity/load	Q kg	1300			1500		
	1.6	Load centre distance	c mm	600					
	1.8	Load distance, centre of drive axle to fork	x mm	914	894	914	764	914	894
	1.9	Wheelbase	y mm	1212			1062	1212	
	Weights	2.1.1	Service weight (incl. battery)	kg	219	244	219		244
2.2		Axle load laden front/rear	kg	703 / 816	735 / 809	703 / 816	700 / 1019		730 / 1014
2.3		Axle load unladen front/rear	kg	166 / 53	176 / 68	166 / 53		176 / 68	
Wheels/suspension system	3.1	Tyres		TPU/PU					
	3.2	Tyre size, front		Ø230x65					
	3.3	Tyre size, rear		Ø80x70					
	3.4	Additional wheels		2 x Ø80x40					
	3.5	Wheels, number front/back (x=driven)		1x+2/4					
	3.6	Tread width, front	b ₁₀ mm	460					
	3.7	Tread width, rear	b ₁₁ mm	368					
Basic dimensions	4.4	Lift (h ₃)	h ₃ mm	120					
	4.9	Height of tiller handle in drive position min./max.	mm	740 / 1190					
	4.15	Height, lowered	h ₁₃ mm	85	90	85		90	
	4.19	Overall length	l ₁ mm	1585	1605	1585	1435	1585	1605
	4.20	Length including fork shank	l ₂ mm	435	455	435			455
	4.21.1	Overall width	b ₁ mm	650		670	650		
	4.22	Fork dimensions	s/e/l mm	55 x 172 x 1150	60 x 182 x 1150	55 x 172 x 1150	55 x 172 x 1000	55 x 172 x 1150	60 x 182 x 1150
	4.25	Width across forks	b ₅ mm	540	550	670	540		550
	4.32	Ground clearance centre of wheelbase	m ₂ mm	35					
	4.34	Aisle width (pallet 1000x1200 sideways)	Ast mm	1643	1663	1643	1493	1643	1663
	4.34.1	Aisle width (pallet 800x1200 length)	Ast mm	1843	1863	1843	1693	1843	1863
	4.35	Turning radius	W _a mm	1357			1207	1357	
Performance data	5.1	Travel speed laden/unladen	km/h	4.5 / 5					
	5.2	Lift speed laden/unladen	m/s	0.05 / 0.06					
	5.3	Lowering speed laden/unladen	m/s	0.08 / 0.04					
	5.8	Max. gradeability laden/unladen	%	4 / 10					

	5.10	Service brake		electric			
E-motor/Electronics	6.1	Drive motor, performance S2 60 min	kW	0.6			
	6.2	Lift motor, performance with S3	kW	1.2			
	6.3	Battery according to DIN 43531/35/36		no			
	6.4	Battery voltage/nominal capacity	V / Ah	24 / 65		24 / 90	
	6.5	Battery weight	kg	35		53	
	6.6.1	Energy consumption according to EN cycle	kWh/h	0.24		0.27	
	6.6.2	CO2 equivalent as per EN 16796	kg/h	0.1		0.2	
Other	8.1	Type of drive control		AC			
	10.7	Sound level as per EN12053, operator's ear	dB (A)	66			
- This data sheet according to VDI guideline 2198 only states the technical values of the standard truck. Different tyres, other masts, additional equipment etc. may result in different values.							

Characteristic	1.1	Manufacturer (abbreviated description)		Jungheinrich					
	1.2	Manufacturer's type designation		EJE M15 670x1000	EJE M15 670x1150	EJE M13 540x1150 Li-ion	EJE M13 550 x 1,150 with weighing function / Li-ion	EJE M13 670x1550 Li-ion	EJE M15 540x1000 Li-ion
	1.3	Drive		Electric					
	1.4	Operation		Pedestrian					
	1.5	Load capacity/load	Q kg	1500		1300		1500	
	1.6	Load centre distance	c mm	600					
	1.8	Load distance, centre of drive axle to fork	x mm	764	914		894	914	764
	1.9	Wheelbase	y mm	1062	1212			1062	
	Weights	2.1.1	Service weight (incl. battery)	kg	219		199	224	199
2.2		Axle load laden front/rear	kg	700 / 1019		703 / 816	735 / 809	703 / 816	700 / 1019
2.3		Axle load unladen front/rear	kg	166 / 53			176 / 68	166 / 53	
Wheels/suspension system	3.1	Tyres		TPU/PU					
	3.2	Tyre size, front		Ø230x65					
	3.3	Tyre size, rear		Ø80x70					
	3.4	Additional wheels		2 x Ø80x40					
	3.5	Wheels, number front/back (x=driven)		1x+2/4					
	3.6	Tread width, front	b ₁₀ mm	460					
	3.7	Tread width, rear	b ₁₁ mm	368					

Basic dimensions	4.4	Lift (h ₃)	h ₃ mm	120					
	4.9	Height of tiller handle in drive position min./max.	mm	740 / 1190					
	4.15	Height, lowered	h ₁₃ mm	85		90	85		
	4.19	Overall length	l ₁ mm	1435	1585	1605	1585	1435	
	4.20	Length including fork shank	l ₂ mm	435		455	435		
	4.21.1	Overall width	b ₁ mm	670		650	670	650	
	4.22	Fork dimensions	s/e/l mm	55 x 172 x 1000	55 x 172 x 1150		60 x 182 x 1150	55 x 172 x 1150	55 x 172 x 1000
	4.25	Width across forks	b ₅ mm	670		540	550	670	540
	4.32	Ground clearance centre of wheelbase	m ₂ mm	35					
	4.34	Aisle width (pallet 1000x1200 sideways)	Ast mm	1493	1643	1663	1643	1493	
	4.34.1	Aisle width (pallet 800x1200 length)	Ast mm	1693	1843	1863	1843	1693	
	4.35	Turning radius	W _a mm	1207	1357			1207	
	Performance data	5.1	Travel speed laden/unladen	km/h	4.5 / 5				
		5.2	Lift speed laden/unladen	m/s	0.05 / 0.06				
5.3		Lowering speed laden/unladen	m/s	0.08 / 0.04					
5.8		Max. gradeability laden/unladen	%	4 / 10					
5.10		Service brake		electric					
E-motor/Electronics	6.1	Drive motor, performance S2 60 min	kW	0.6					
	6.2	Lift motor, performance with S3	kW	1.2					
	6.3	Battery according to DIN 43531/35/36		no					
	6.4	Battery voltage/nominal capacity	V / Ah	24 / 90		25.6 / 50			
	6.5	Battery weight	kg	53		15			
	6.6.1	Energy consumption according to EN cycle	kWh/h	0.27		0.24		0.27	
	6.6.2	CO ₂ equivalent as per EN 16796	kg/h	0.2		0.1		0.2	
Other	8.1	Type of drive control		AC					
	10.7	Sound level as per EN12053, operator's ear	dB (A)	66					
- This data sheet according to VDI guideline 2198 only states the technical values of the standard truck. Different tyres, other masts, additional equipment etc. may result in different values.									

Characteristic	1.1	Manufacturer (abbreviated description)	Jungheinrich				
	1.2	Manufacturer's type designation	EJE M15 540x1150 Li-Ion	EJE M15 550 x 1,150 with weighing function / Li-ion	EJE M15 670x1000 Li-Ion	EJE M15 670x1150 Li-Ion	
	1.3	Drive	Electric				

	1.4	Operation		Pedestrian			
	1.5	Load capacity/load	Q kg	1500			
	1.6	Load centre distance	c mm	600			
	1.8	Load distance, centre of drive axle to fork	x mm	914	894	764	914
	1.9	Wheelbase	y mm	1212		1062	1212
Weights	2.1.1	Service weight (incl. battery)	kg	199	224	199	
	2.2	Axle load laden front/rear	kg	700 / 1019	730 / 1014	700 / 1019	
	2.3	Axle load unladen front/rear	kg	166 / 53	176 / 68	166 / 53	
Wheels/suspension system	3.1	Tyres		TPU/PU			
	3.2	Tyre size, front		Ø230x65			
	3.3	Tyre size, rear		Ø80x70			
	3.4	Additional wheels		2 x Ø80x40			
	3.5	Wheels, number front/back (x=driven)		1x+2/4			
	3.6	Tread width, front	b ₁₀ mm	460			
	3.7	Tread width, rear	b ₁₁ mm	368			
Basic dimensions	4.4	Lift (h ₃)	h ₃ mm	120			
	4.9	Height of tiller handle in drive position min./max.	mm	740 / 1190			
	4.15	Height, lowered	h ₁₃ mm	85	90	85	
	4.19	Overall length	l ₁ mm	1585	1605	1435	1585
	4.20	Length including fork shank	l ₂ mm	435	455	435	
	4.21.1	Overall width	b ₁ mm	650		670	
	4.22	Fork dimensions	s/e/l mm	55 x 172 x 1150	60 x 182 x 1150	55 x 172 x 1000	55 x 172 x 1150
	4.25	Width across forks	b ₅ mm	540	550	670	
	4.32	Ground clearance centre of wheelbase	m ₂ mm	35			
	4.34	Aisle width (pallet 1000x1200 sideways)	Ast mm	1643	1663	1493	1643
	4.34.1	Aisle width (pallet 800x1200 length)	Ast mm	1843	1863	1693	1843
	4.35	Turning radius	W _a mm	1357		1207	1357
Performance data	5.1	Travel speed laden/unladen	km/h	4.5 / 5			
	5.2	Lift speed laden/unladen	m/s	0.05 / 0.06			
	5.3	Lowering speed laden/unladen	m/s	0.08 / 0.04			
	5.8	Max. gradeability laden/unladen	%	4 / 10			
	5.10	Service brake		electric			
E-motor/Electronics	6.1	Drive motor, performance S2 60 min	kW	0.6			
	6.2	Lift motor, performance with S3	kW	1.2			
	6.3	Battery according to DIN 43531/35/36		no			
	6.4	Battery voltage/nominal capacity	V / Ah	25.6 / 50			
	6.5	Battery weight	kg	15			
	6.6.1	Energy consumption according to EN cycle	kWh/h	0.27			

	6.6.2	CO2 equivalent as per EN 16796	kg/h	0.2
Other	8.1	Type of drive control		AC
	10.7	Sound level as per EN12053, operator's ear	dB (A)	66
<p>- This data sheet according to VDI guideline 2198 only states the technical values of the standard truck. Different tyres, other masts, additional equipment etc. may result in different values.</p>				

The German production facilities in
Norderstedt, Moosburg and Landsberg
are certified.

ISO 9001
ISO 14001

Jungheinrich fork lift trucks meet
European safety requirements.



 **JUNGHEINRICH**

The Jungheinrich logo, featuring a red upward-pointing arrow above the word 'JUNGHEINRICH' in a bold, black, sans-serif font.